



 **mara**  
since 1960  
PERFORMING TECHNOLOGY MADE IN ITALY

 **mara**  
since 1960  
PERFORMING TECHNOLOGY MADE IN ITALY

**MARA s.r.l.**

via Adua, 11  
25050 Passirano (BS)  
ITALY

Tel. 0039.030.6857568  
Fax 0039.030.6857281

website: [www.marasrl.it](http://www.marasrl.it)  
e-mail: [info@marasrl.it](mailto:info@marasrl.it)



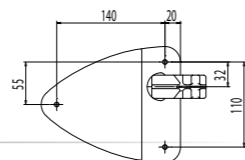
TÜV certified

*Mara si riserva il diritto di apportare in qualsiasi momento modifiche costruttive e funzionali*

*Mara has the right to modify its products at any time.*

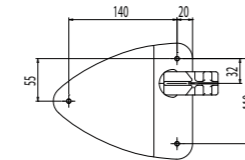
**Snodi e Tavolette**  
*Mechanisms and Tablets*





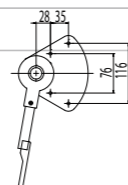
**0625**

Snodo antipánico per tavoletta 0626 con doppio ribaltamento anteriore esterno.  
*Anti-panic mechanism for tablet 0626 with double frontal external upsetting.*



**0604**

Snodo per tavoletta 0626 con doppio ribaltamento anteriore esterno.  
*Writing tablet mechanism for tablet 0626 with double frontal external upsetting.*

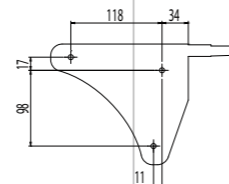


**0612**

Snodo antipánico destro per tavolette 6610L-6610N con doppio ribaltamento posteriore esterno con attacco Ø 18 mm.  
*Right hand anti-panic mechanism for tablets 6610L-6610N with double rear external upsetting with Ø 18 mm connection.*

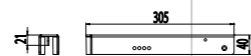
**0612 S**

Snodo antipánico sinistro per tavolette 6610L-6610N con doppio ribaltamento posteriore esterno con attacco Ø 18 mm.  
*Left hand anti-panic mechanism for tablets 6610L-6610N with double rear external upsetting with Ø 18 mm connection.*



**0615**

Snodo antipánico per tavolette 6611-6612 con ribaltamento anteriore interno a scomparsa.  
*Anti-panic mechanism for tablets 6611-6612 with hiding frontal upsetting.*



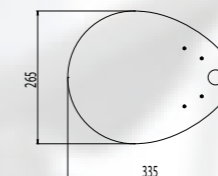
**15000024**

Mensola attacco bracciolo per snodo 0615.  
*Armrest bracket for mechanism 0615.*



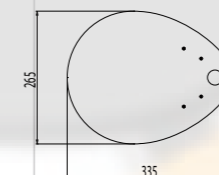
**0626**

Tavoletta scrittoio in plastica (utilizzabile con snodi 0625-0604). Colore standard: nero.  
*Plastic writing tablet (can be assembled with mechanisms 0625-0604). Standard colour: black.*



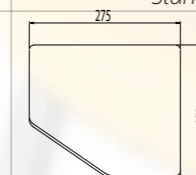
**6610L**

Tavoletta scrittoio multistrato legno con laminato (utilizzabile con snodi 0612-0612S). Colori standard: nero, grigio chiaro.  
*Writing tablet in laminated wood (can be assembled with mechanisms 0612-0612S). Standard colours: black, light grey.*



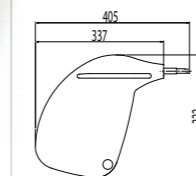
**6610N**

Tavoletta in nylon (utilizzabile con snodi 0612-0612S). Colore standard: antracite.  
*Writing tablet in nylon (can be assembled with mechanisms 0612-0612S). Standard colour: anthracite.*



**6611**

Tavoletta scrittoio multistrato legno con laminato (utilizzabile con snodo 0615). Colori standard: nero, grigio chiaro.  
*Writing tablet in laminated wood (can be assembled with mechanism 0615). Standard colours: black, light grey.*



**6612**

Tavoletta in PU integrale con inserto acciaio (utilizzabile con snodo 0615). Colore standard: nero.  
*Integral PU tablet with steel pivot (can be assembled with mechanism 0615). Standard colour: black.*